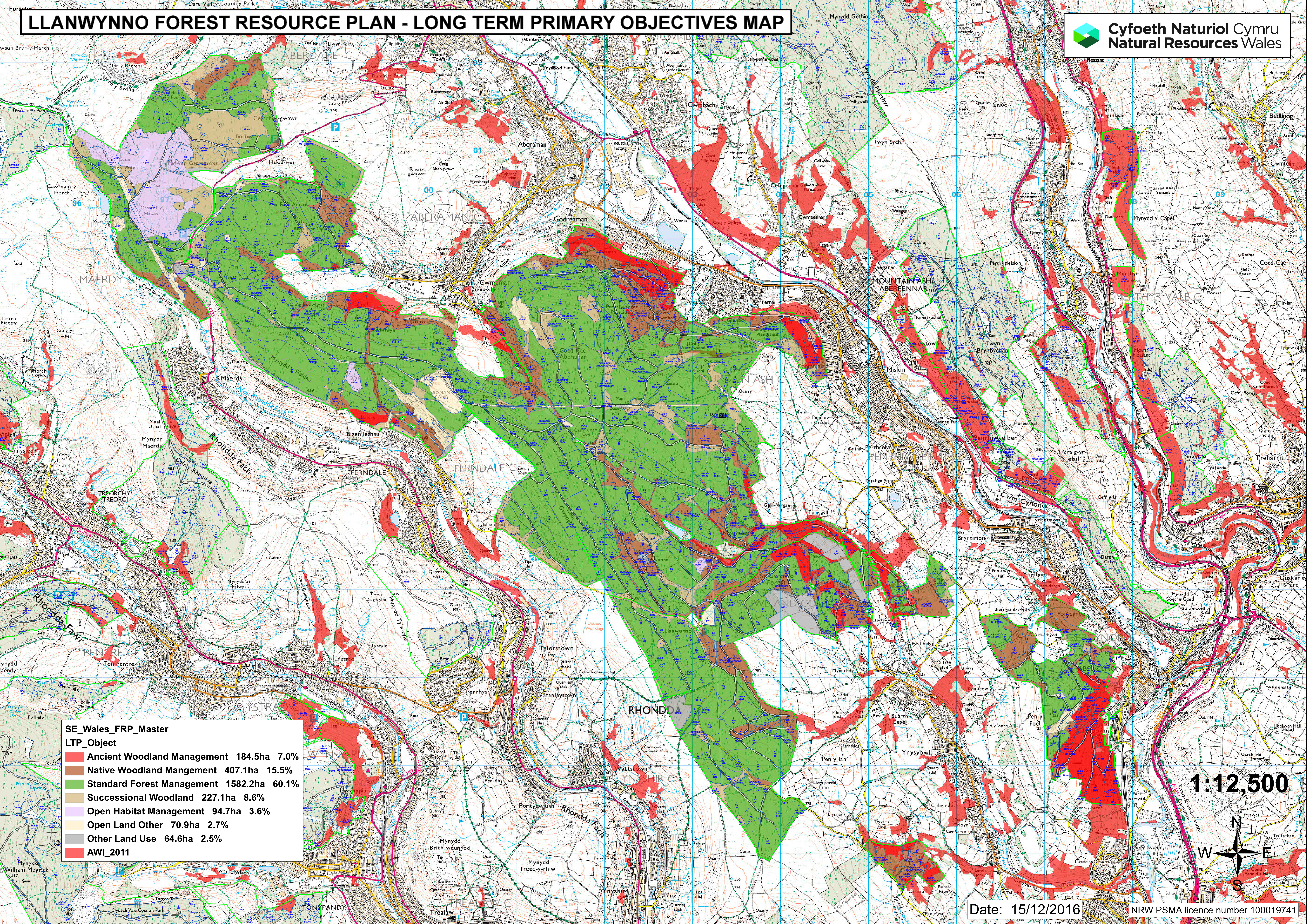


LLANWYNNO FOREST RESOURCE PLAN - LONG TERM PRIMARY OBJECTIVES MAP



SE_Wales_FRP_Master
LTP_Object

■ Ancient Woodland Management	184.5ha	7.0%
■ Native Woodland Mangement	407.1ha	15.5%
■ Standard Forest Management	1582.2ha	60.1%
■ Successional Woodland	227.1ha	8.6%
■ Open Habitat Management	94.7ha	3.6%
■ Open Land Other	70.9ha	2.7%
■ Other Land Use	64.6ha	2.5%
■ AWI_2011		

1:12,500

