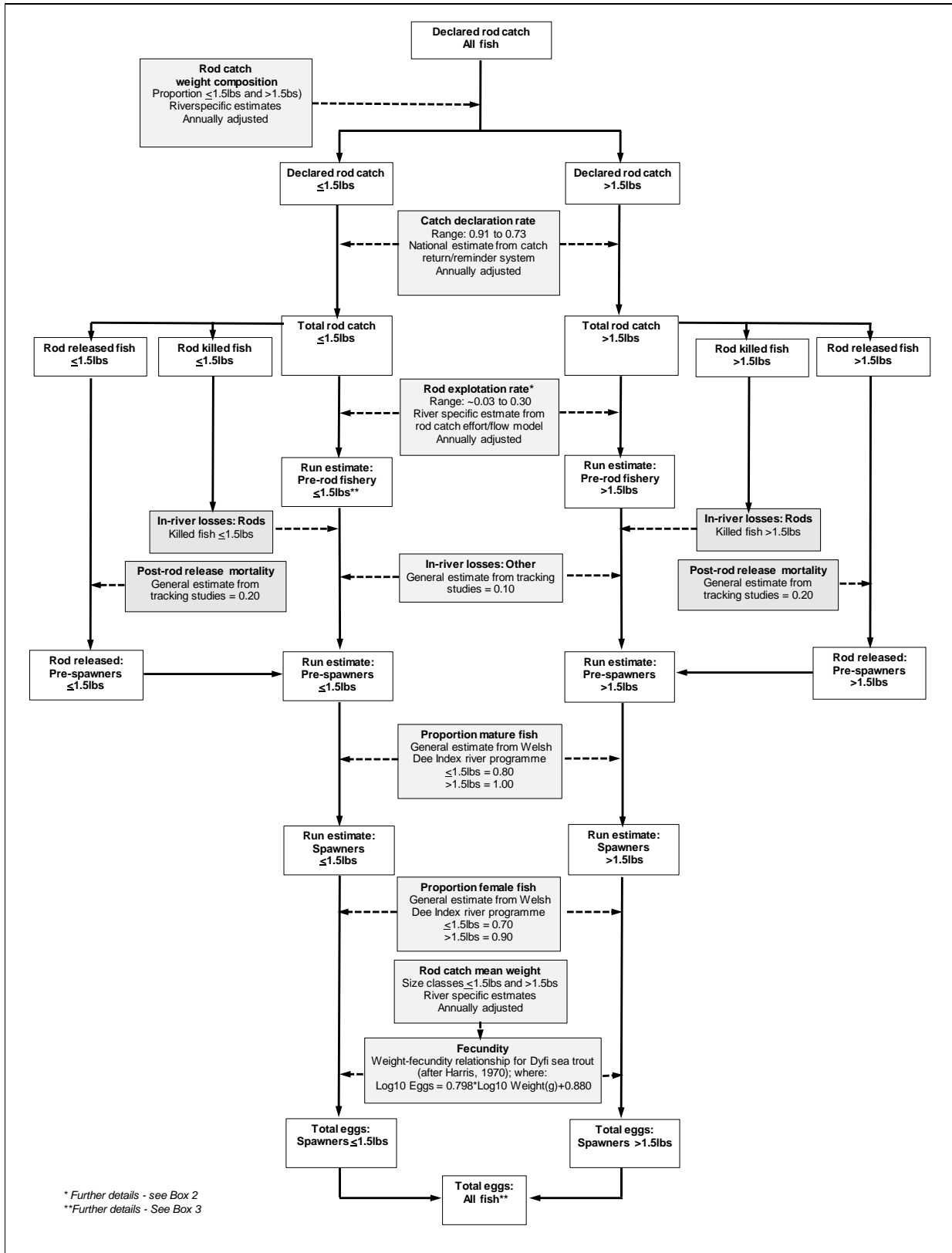


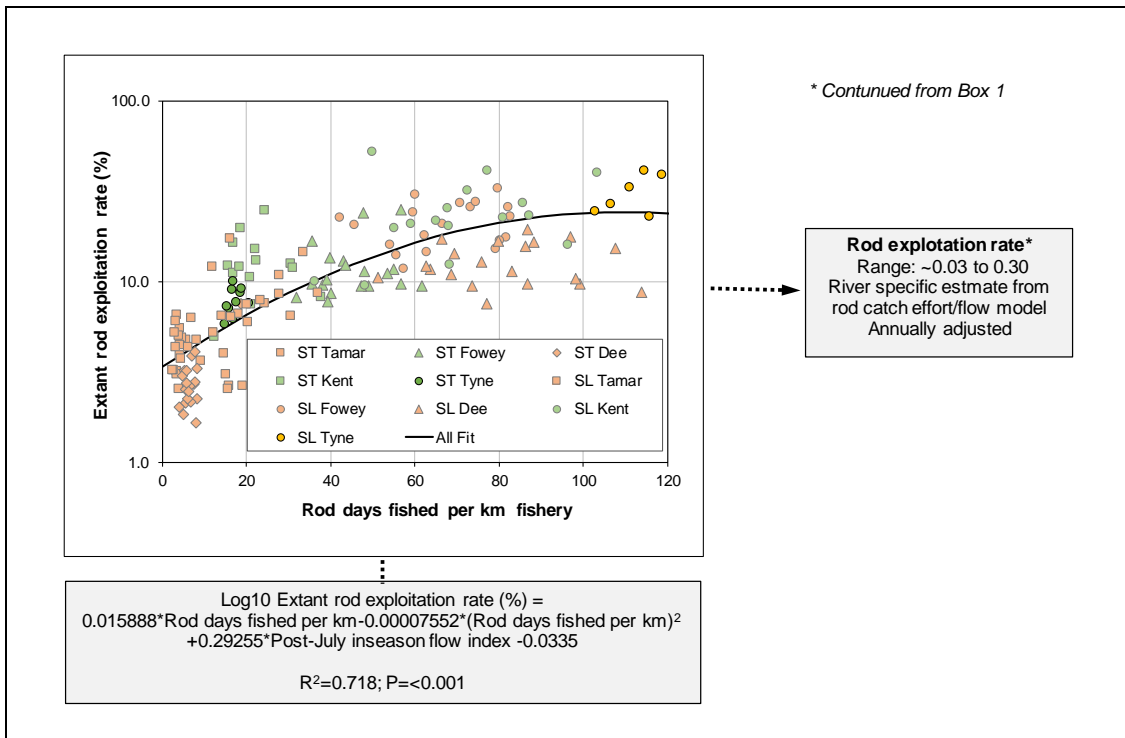
Sea trout SR stock assessment

Sea trout stock-recruitment (SR) based assessment: Summary of procedures used to (i) generate river specific run and egg deposition estimates from rod catch and (ii) derive SR curves and associated reference points from these data.

Box1: Procedures to generate run and egg deposition estimates from rod catch



Box 2. Rod exploitation rate model – based on exploitation rate estimates from counted rivers and utilising angling effort and flow as ‘predictor’ variables.



Box 3. Application of ‘whitling’ run (fish $\leq 1.5\text{lbs}$) and egg deposition estimates (all fish) to derive SR relationships and assess CL compliance (Teifi example shown).

