



















































































































































## Measure: Climate emergency action across NRW

The measure reflects activity being undertaken on the Climate emergency across NRW: through the delivery of our climate change decarbonisation programme.

### Latest position (to end of March 2022):

- Our final milestone for this year is to produce an outcome report on the delivery of the top ten priority areas of the Climate Change and Decarbonisation Change Programme, (CCDCP). Whilst we have completed this specific milestone activity (we reported on progress over the past 24 months to the Executive Team at its meeting on the 31st January 2022), there have been issues with delivery of the overall climate change and decarbonisation change programme due to vacancies and dependencies on delivery across NRW in different functions.
- Over the last year we have produced: a CCDCP Work Programme endorsed by the CCDCP Board with an associated climate change risk owned by Leadership Team Group and have created a new Climate Change and Decarbonisation Team to give greater prominence within NRW of our work on decarbonisation and climate risk and adaptation.
- This measure is amber at year end to reflect the programme overall.

### What we are doing next:

- We will now continue our work in developing an Adaptation Plan for NRW, commencing with an Adaptation Report that establishes our current actions. We will also progress developing our plans for how we decarbonise our transport, built estate and procurement by 2030, and will roll-out carbon literacy training across NRW to support behaviour change and innovation. We will also continue to refresh the governance for the climate change and decarbonisation change programme to drive delivery and risk management across the organisation.
- This measure is likely to continue to form part of our Business Plan dashboard reporting for 2022/23 as we progress the development and delivery of decarbonisation and climate change adaptation policy and actions across NRW.

Measure owner: Ruth Jenkins

Q1	to Q2	to Q3	Year end
Amber	Green	Amber	Amber

See [here](#) for key used for green, amber or red status

[To return to start of report - see [Business Plan Performance Dashboard](#) - pages 1 and 2]

## Topic: Creating New Woodland

### Topic summary progress:

- We are playing a key role in delivery and support for the 39 Recommendations from the Ministerial "Deep Dive" on woodland creation and timber use. We are reporting to WG on progress on those recommendations on which NRW are leading.
- We continue to provide WG with advice, technical guidance and support, including support on their Woodland Creation work and the upcoming Agricultural Bill and Sustainable Farming Scheme.
- We continue to progress woodland creation on the WG Woodland Estate.

Topic owner: Ruth Jenkins

### Business Plan dashboard measure/s for this topic:

- [Verification of Glastir Woodland grant scheme applications](#)
- [Area of new woodland created on the NRW Estate](#)

*[To return to start of report - see [Business Plan Performance Dashboard](#) - pages 1 and 2]*



### Measure: Area of new woodland created on the NRW Estate

This measure reflects the area of new woodland created on the NRW Estate (hectares acquired / identified if already in ownership and hectares planted). It covers the contribution of NRW's land estate to woodland creation and progress on the commitment to the [Welsh Government Woodland Estate \(WGWE\)](#) being bigger in 25 years than it was in 2018.

#### Latest position (to end of March 2022):

- Our **final milestone for this year is 150ha acquired/identified and 150ha planted**
- We have not completed this milestone activity. We have acquired/identified 157ha and planted 27ha.
- Over the last year, we have made good progress identifying land for planting, as well as looking after the sites we planted last year. Timescales for planting were tight due to difficulty securing land last year, we successfully planted one site but made the decision to delay a total of 105ha of planting at two of our sites to the Autumn to allow for further stakeholder engagement.
- **This measure is amber at year end.**

#### What we are doing next:

- We will now carry out planning, including community engagement, so that we are to plant the sites acquired this year in 2022/23. We will work to complete on the three sites that are currently with solicitors and continue identifying land for planting, including through mechanisms other than land acquisition.
- This measure is likely to continue to form part of our Business Plan dashboard reporting for 2022/23 as woodland creation is a key activity in improving the resilience of the NRW estate to cope with climate change.

Measure owner: Dominic Driver

Q1	to Q2	to Q3	Year end
Green	Green	Green	Amber

See [here](#) for key used for green, amber or red status

[To return to start of report - see [Business Plan Performance Dashboard](#) - pages 1 and 2]

































## Measure: Number of UK Woodland Assurance Standard (UKWAS) Corrective Action Requests (CARs) and Observations (Obs) open and progress towards closing them.

Being certified via UKWAS shows we [sustainably manage the Welsh Government Woodland Estate \(WGWE\)](#) reaching Forest Stewardship Council® (FSC®) and Programme for the Endorsement of Forest Certification (PEFC) international standards. Wales' state forests have been certified via UKWAS since 2001 and we aim to keep it that way.

### Latest position (to end of March 2022):

- In 2021, we retained certification with 1 major CAR, 1 minor CAR and 5 Obs, fewer than in 2020 and we want fewer still.
- Our auditors assess evidence of closure. They have closed the major CAR. Work is in progress to close out the 1 minor CAR and 4 of the Obs at the 2022 audit. 1 Obs will remain open during the period of the certificate with evidence of progress being provided annually.
- **This measure is green at year end**, due to us retaining certification this year.

### What we are doing next:

- Build on the good result to further embed progress on the quality of our sustainable forest management.
- Continue to work on closure of CARs and Obs.
- Prepare staff and systems for the 2022 audit scheduled for November in North West and South Central regions.

Measure owner: Dominic Driver

Q1	to Q2	to Q3	Year end
Amber	Green	Green	Green

See [here](#) for key used for green, amber or red status

[To return to start of report - see [Business Plan Performance Dashboard](#) - pages 1 and 2]



## Topic: Managing the Sea Sustainably

### Topic summary progress (i.e. overview of work undertaken against this topic):

- Our work on the topic Managing the Sea Sustainably is coordinated via NRW's Marine Programme. Progress continues to be made in all key work areas including delivering: implementation of the Welsh National Marine Plan; NRW's Offshore Renewable Energy Programme; NRW's Integrated Coastal Management Programme, with a focus on coastal squeeze; plan and project level marine casework advice; blue carbon work programme; work on practical marine and coastal restoration and ecosystem resilience; contributing to the Wales green / blue recovery programme; implementation of the Marine Area Statement; Marine Protected Area (MPA) condition improvement projects and MPA network management actions; technical support to WG in identifying new Marine Conservation Zones to complete the Welsh MPA network; marine monitoring and reporting; the prioritised marine evidence programme; management of the Dee and Burry Inlet cockle fisheries and the Dee Conservancy.
- Whilst across the programme most work is on track, many areas are dependent on single-year funding. A number of areas have been flagged in the baseline exercise in terms of delivery risk due to resources, and also in the 3-year Grant in Aid (GIA) budget bidding exercise, including MPA management and restoration, marine monitoring, and, critically, the Offshore Renewable Energy Programme which is due to grow as a result of new technologies - for the latter progress has been made in confirming existing suite of roles as permanent, and a business case has been made for additional resources needed to keep pace with sector growth.
- A suite of marine projects has been secured via the Nature Network Fund which will lead to tangible improvements in the management and ultimately condition of MPAs. Progress also being made with all Welsh Government renewable energy deep dive actions.

Topic owner: Rhian Jardine

### Business Plan dashboard measure/s for this topic:

- [Support implementation of the Welsh National Marine Plan](#)
- [Progress NRW's actions in the Wales Marine Protected Area network management actions plan](#)

*[To return to start of report - see [Business Plan Performance Dashboard](#) - pages 1 and 2]*

## Measure: Support implementation of the Welsh National Marine Plan

This measure reflects progress in relation to Welsh National Marine Plan (WNMP) implementation including the need to support proportionate decisions that take full account of environmental, social and economic considerations under the new planning framework.

### Latest position (to end of March 2022):

- Our **final milestone for this year is to sign-off priority products**
- We have completed this milestone. Enhancement and Restoration Principles has been finalised and signed off by Marine Programme Planning and Delivery Group (MPPDG). This guidance is complemented by the evidence report published in July 2021: 'Restoring Marine and Coastal Habitats in Wales: Identifying Spatial Opportunities and benefits.'
- We have also completed the proportionality 'challenge' checklist, which supports marine advisory staff in ensuring their advice is proportionate. The Marine Advice Handbook (first iteration) will be taken to the April MPPDG for approval.
- **This measure is green at year end.**

### What we are doing next:

- We will continue to work to capture relevant guidance and evidence in the WNMP Implementation Table, and to deliver shared priorities.
- We will continue to support development of the spatial approach to planning including Strategic Resource Areas (as per Renewable Energy Deep Dive recommendation) through provision of spatial environmental evidence.
- This measure is likely to continue for 2022/23 as NRW are a key delivery body for the WNMP, next financial year marks the first 3-year review period for the marine plan, so there will be increased external scrutiny of this aspect of our work.

Measure owner: Rhian Jardine

Q1	to Q2	to Q3	Year end
Green	Green	Green	Green

See [here](#) for key used for green, amber or red status

[To return to start of report - see [Business Plan Performance Dashboard](#) - pages 1 and 2]





## Topic: Managing Freshwater sustainably

### Topic summary progress (i.e. overview of work undertaken against this topic):

- During 2020 and 2021, we saw increased public awareness of the quality of Wales' rivers and sea. We recognised that we need to review our future ambition and priorities for delivering better water quality in Wales, in line with the Ministerial ambition outlined in the Programme for Government. Sian Williams is leading this work, and our Review will develop further during 2022/23.
- There are several pieces of work already under way, including establishing the Special Areas of Conservation (SAC) Rivers Programme to assess the causes and consequent actions required to bring the SAC rivers back into favourable condition. An increase in attention around storm discharges from sewers, led to the formation of the Better River Quality task force in Wales, the first output from which will be the Storm Overflow roadmap and action plan to be launched shortly. We participated, alongside OFWAT and the Water Companies in a Senedd review to Storm Discharges, and their report was published on 15th March. Within the report there are a number of actions for NRW, and we will deliver against these in line with the timescales stipulated.
- We continue to work closely with government, regulators and water companies on water company planning work in preparation for the Periodic Review of prices (PR24), developing our approach to the National Environment Programme and the new drainage and wastewater management plans and advising on the ever expanding programme of water resources planning work.
- We will work alongside Welsh Government, other regulators, academics, and other interested parties to develop a clear ambition that will help deliver what is needed to ensure water is managed sustainably, helping to tackle the climate and nature emergencies.

Topic owner: Sian Williams

### Business Plan dashboard measure/s for this topic:

- [Deliver remaining water related investigations and develop new River Basin Management Plans](#)

*[To return to start of report - see [Business Plan Performance Dashboard](#) - pages 1 and 2]*





## Topic: Creating a Shared Vision for the Natural Environment for 2050 - Natur a Ni / Nature and Us

### Topic summary progress (i.e. overview of work undertaken against this topic):

- The 'Nature and Us' national conversation was launched on 17<sup>th</sup> February and received widespread media interest.
- Following significant input from internal specialists and external partners we expanded the range of products for launch which increased the variety of opportunities for the public to get involved, including postcards, a discussion guide, and an option to provide more creative responses.
- The first 6 weeks of the campaign have resulted in high numbers of survey completions and event registrations.
- Work has continued to promote the campaign through networks including Community Housing Cymru, Public Health Wales, Wales Council for Voluntary Action and One Voice Wales, community groups and youth organisations.
- Resources made available through the education sector including all Welsh primary and secondary schools, Wales Outdoor Learning Network, and championed by youth organisations such as Duke of Edinburgh Awards.

Topic owner: Sarah Williams

### Business Plan dashboard measure/s for this topic:

- **Develop Natur a Ni / Nature and Us campaign products for launch**

*[To return to start of report - see [Business Plan Performance Dashboard](#) - pages 1 and 2]*





## Measure: Promote, advocate and encourage use of State of Natural Resources Report

This measure reflects action to promote, advocate and encourage use of [the State of Natural Resources Report \(SoNaRR2020\)](#) evidence and key findings to realise the benefits of the sustainable management of natural resources (SMNR).

### Latest position (to end of March 2022):

- Our **final milestone for this year is summary of engagement, feedback and use of SoNaRR and the application in Area Statements.**
- We have completed this milestone activity. We have listened to feedback from SoNaRR users and changed web pages to improve the user experience. We will continue to do this in the coming months.
- Over the last year, we have explained the SoNaRR findings to stakeholders across Wales and the UK. We have used SoNaRR as evidence to deliver our work and encouraged others to do the same. For example: Wales TUC, Senedd Research, Local Nature Partnerships and Welsh Government reports and policies have been informed by SoNaRR.
- Area Statement Ecosystem profiles used the evidence set out in the SoNaRR2020 Ecosystem assessments.
- We have used opportunities to integrate the 4 aims, 3 systems messages from SoNaRR2020 with key strategic partners through Well-being assessments and Well-being plans.
- The SoNaRR evidence needs have been used to shape NRW evidence programmes and to frame our work with academics and professional societies.
- **This measure is green at year end.**

### What we are doing next:

- We will continue to listen to feedback from users and make changes to the structure on the website. We will use feedback to start planning for SONaRR2025.

Measure owner: Chris Collins

Q1	to Q2	to Q3	Year end
Green	Green	Green	Green

See [here](#) for key used for green, amber or red status

[To return to start of report - see [Business Plan Performance Dashboard](#) - pages 1 and 2]





## Measure: Use of Area Statements within NRW to embed priorities and opportunities

This measure reflects the use of [Area Statements](#) within NRW particularly in our Service and Place plans and through joint working to embed priorities and opportunities.

### Latest position (to end of March 2022):

- We have framed our 2022-23 Place Plans around Area Statement priorities and opportunities. We have developed a concept paper for a national framework to better enable place-based delivery of the Natural Resources Policy. Case studies report considerable traction with place-based activities and growing influence at local level. However, our evaluation is revealing that at regional level there is further work to do to improve the visibility of Area Statements as part of the growing regional development agenda and with delivery bodies like Corporate Joint Committees (CJCs) which help regional collaboration between local authorities. Opportunities to take forward the ambition for systems thinking around transport, energy and food evident in SoNaRR will need to be grasped by tactical scaling up of area statement delivery and influence at a local scale allied to provision of clear advice and effective translation of national policy/planning drivers at a regional scale.
- Over the last year we have worked with colleagues internally to explore opportunities to align other work programmes to deliver Area Statement priorities. **This measure is green at year end.**

### What we are doing next:

- We will now continue to take a place-based approach to aligning work programmes with Area Statement priorities including putting more emphasis on influencing regional scale governance groups. We will work with our Public Services Board partners to develop Well-being Objectives and Well-being Plans.
- This measure is likely to continue to form part of our Business Plan dashboard reporting for 2022/23 as the work to embed the priorities and opportunities in Area Statements and SoNaRR is ongoing.

Measure owner: Martyn Evans

Q1	to Q2	to Q3	Year end
Green	Green	Green	Green

See [here](#) for key used for green, amber or red status

[To return to start of report - see [Business Plan Performance Dashboard](#) - pages 1 and 2]



## Topic: Responding to and Managing Incidents

### Topic summary progress (i.e. overview of work undertaken against this topic):

- **Preparedness:** Development of the guidance materials that support our response roles has continued at pace, including the update of our Incident Categorisation Guidance and development of Incident Recovery Guidance.
- **Response:** In a challenging year, we have continued to respond to several incidents that have occurred recently, as well as managing the Covid, Avian Influenza and *Phytophthora pluvialis* responses. We have also continued development of additional topic specific Critical Incident Plans to help guide our response to those incidents that have the largest potential impact.
- **Review:** Incident reviews have been carried out for recent incidents, including the March wildfires, with the recommendations resulting in actions and the embedding of learning from our experience.
- **Recording & reporting:** Preparations for upgrading our incident recording system to a new web version have continued, with testing underway and implementation due in Quarter 1 2022/23.
- **Training:** Training of new rota volunteers has been taking place across the organisation, improving our skills and capabilities to deal with all types of incidents, including those officers on the new Land Management Duty Officer rotas.
- **Exercising:** Teams across NRW have continued to take part in exercises both internally and with our multi-agency partners. The learning from these exercises has been factored into our ongoing training programme.
- **Rota Resilience:** Rota resilience is being improved through the introduction of new contractual rota arrangements and the training of rota volunteers, who have started to join rotas following completion of their training.
- **Business Continuity:** Additional actions have been carried out (with others ongoing) to improve resilience and our ability to respond to incidents that could disrupt our critical and priority business activities. These actions have been driven by learning from the Coronavirus Pandemic and the sharing of information by our partners in relation to recent Cyber-attacks and associated exercises.

Topic owner: Lyndsey Rawlinson

### Business Plan dashboard measure/s for this topic:

- [Response to incidents \(initial category 'High', within 4 hours\)](#)

To return to start of report - see [Business Plan Performance Dashboard](#) - pages 1 and 2]



## Topic: Regulation – permitting, regulating, and where required enforcing compliance

### Topic summary progress (i.e. overview of work undertaken against this topic):

- Progress for Q4 in relation to the Performance of regulated sites measure has been as expected. The measure is green with 100% of the sites with category 1 and category 2 compliance breaches receiving an appropriate regulatory response determination within 6 months.
- It should be noted that slightly fewer compliance breaches have been found in this reporting quarter (July – September 2021) than the previous reporting quarter (April – June 2021) and the number of compliance breaches are still significantly below the number of compliance breaches reported in the pre-pandemic reporting quarter of January – March 2020.

Topic owner: Nadia De Longhi

### Business Plan dashboard measure/s for this topic:

- Performance of regulated sites and water quality discharges

*[To return to start of report - see [Business Plan Performance Dashboard](#) - pages 1 and 2]*



## Topic: Benefitting Communities

### Topic summary progress:

- In this topic we focus on work to better engage with stakeholders at all scales in Wales to improve our approaches and how well we are engaging in Place to understand the nuances of local needs impacting on approaches to delivery.
- We continue to conduct regular meetings with key Environmental stakeholders to ensure they are involved with our thinking about the new Grants Portfolio. Their contributions have been helpful in understanding the priorities and appetite for our intended areas of grants support for the next two years. We look forward to continued conversations with this influential sector group as we enter the next steps as well as wider discussions about how we recognise each other's ambitions for delivering outcomes for Wales. Similarly, we have two representatives from the grants third sector community (Wales Environment Link (WEL) and Wales Council for Voluntary Action (WCVA)) representing the voice of customers to help us develop our grants offer. Our work this quarter to contribute effectively to the well-being assessments being developed by each PSB across Wales will help set the agenda for the next 5 years in the ensuing Well-being Plans.
- We have completed the recruitment to the new Grants Assessment and Monitoring team. Training has been delivered for them and others in the new processes. So, we now have more capable resources to deploy to both ensure in flight grants are well managed as we approach year end and the associated increase in grants claim alongside processing the new grants emerging from the identified programmes for 2022/23.
- We have finalised the agreement with Arts Council Wales (ACW) and now have the green light to commence the Creative Nature Programme. This 12 month programme will explore how the arts can be used to enhance how we engage with people and communities. Work strands will use art installations as innovative approaches to challenge current thinking about food, energy and transport systems, decarbonisation and the future of the natural environment.

Topic owner: Ruth Jenkins

### Business Plan dashboard measure/s for this topic:

- [Deliver NRW's combined health and educator training](#)

*[To return to start of report - see [Business Plan Performance Dashboard](#) - pages 1 and 2]*







## Measure: Develop and implement a People Strategy for NRW

This measure reflects the development and implementation of our People Strategy.

### Latest position (to end of March 2022):

- Our final milestone for this year is to have priority actions underway and complete where appropriate, in line with the People Strategy action plan.
- Over the last year we have been developing the People Strategy and have completed this milestone activity with our Board signing off our People Strategy in January 2022.
- The urgent key risk with regards resourcing is being delivered through our Strategic Risk – Resourcing.
- **This measure is green.**

### What we are doing next:

- We will now develop a communications plan to share the People Strategy with staff.
- This measure is not likely to continue to form part of our Business Plan dashboard reporting for 2022/23.

Measure owner: Steve Burton

Q1	to Q2	to Q3	Year end
Green	Green	Green	Green

See [here](#) for key used for green, amber or red status

*[To return to start of report - see [Business Plan Performance Dashboard](#) - pages 1 and 2]*

### Measure: Equality, Diversity and Inclusion action

This measure reflects development and implementation of our Equality, Diversity and Inclusion (EDI) Action Plan, now superseded by 'Gyda'n Gilydd - All Together' - NRW's Inclusion and Diversity Strategy 2021-25 and high-level plan.

#### Latest position (to end of March 2022):

- Our final milestone for this year is to complete a sub plan for 2022-2023 based upon the review in Q3 and agree with the NRW board.
- We have completed this milestone activity. We received approval from Board on 28 January 2022 for our All Together - NRW's Inclusion Strategy and Diversity 2021-25.
- Over the last year, we have been developing our strategy with input from staff and external stakeholders.
- This measure is green at year end.

#### What we are doing next:

- We will now be developing a supporting action plan and a steering group to oversee deliverables for the duration of the strategy.
- This measure is likely to continue to form part of our Business Plan dashboard reporting for 2022/23 as we shape our developing culture through the lens of our NRW Values and focus on inclusive ways of working and increased innovation through diversity of thought. This includes our approach to service delivery and workforce issues as well as seeking to widen participation in the environment incorporating a wide understanding of diversity and inclusion.

Measure owner: Steve Burton

Q1	to Q2	to Q3	Year end
Green	Green	Green	Green

See [here](#) for key used for green, amber or red status

[To return to start of report - see [Business Plan Performance Dashboard](#) - pages 1 and 2]

## Topic: Understand and Improve our Customers' Experiences

### Topic summary progress:

- New Customer Experience Manager post has been filled and post holder joined the team in January 2022.
- Work has begun on gathering and consolidating current customer insight to understand what we already have and to identify gaps and opportunities. These include feedback from Visitors centres, website and through the Customer Hub.
- We are reviewing the way we analyse and report customer insight across NRW to ensure it is of value to teams and is actionable.
- NRW wide Customer Journey Mapping exercise started in March 2022 and will run for next 12 months.

Topic owner: Naomi Lawrence

### Business Plan dashboard measure/s for this topic:

- [Progress the Customer Experience Strategy](#)
- [Deliver our Stakeholder Engagement Plan](#)

*[To return to start of report - see [Business Plan Performance Dashboard](#) - pages 1 and 2]*

## Measure: Progress the Customer Experience Strategy

This measure reflects the Progress of the Customer Experience Strategy

### Latest position (to end of March 2022):

- Our final milestone for this year is to begin a review of results of the customer journey mapping exercise and agree next steps.
- We have not completed this milestone activity. We only started the Customer Journey Mapping project in March 2022. It was significantly delayed as we unable to find a supplier and had to go out to tender multiple times.
- Over the last year we have had to put this piece of work out to tender three times as we were unable to find an external supplier. In February 2022 we successfully appointed a supplier and work commenced in March 2022 and will continue for 12 months.
- **This measure is red at year end**

### What we are doing next:

- We will now continue to work with our external supplier over the next 12 months to deliver the Customer Journey mapping project as per the original delivery plan.
- This measure is likely to form part of our Business Plan dashboard reporting for 2022/23 as work will continue until March 2023 and this is the foundational piece work which will set our direction moving forward.

Measure owner: Naomi Lawrence

Q1	to Q2	to Q3	Year end
Green	Green	Amber	Red

See [here](#) for key used for green, amber or red status

[To return to start of report - see [Business Plan Performance Dashboard](#) - pages 1 and 2]



## Topic: Making the most of commercial opportunities

### Topic summary progress (i.e. overview of work undertaken against this topic):

- It has been an excellent year for commercial opportunity within NRW. Although the amount delivered on the ground is small, we have made great progress in developing better internal processes, exploring and discussing across the business potential opportunities, and researching more innovating markets and practices that could help develop greater SMNR benefits through commercial delivery.
- 3P approach (People, Planet, Prosperity) has been outlined and work has started to embed this.
- The Sustainable Commercial Opportunities Group (SCOG) and Commercial Network (CN) are up and running to make the most of opportunities that are presented to NRW for development.
- Work continues to improve the Timber Sales Governance Standards.
- Partnership working with Welsh Government on the Wind Energy opportunities.
- Ministerial Deep Dive Initiatives are filtering through to our approach on the ground.
- Commercial Strategy is embedded and is being used to drive Commercial Outcomes.

Topic owner: Elsie Grace

### Business Plan dashboard measure/s for this topic:

- Implement our Commercial Strategy
- Timber volume offered to market / sold / dispatched

*[To return to start of report - see [Business Plan Performance Dashboard](#) - pages 1 and 2]*

## Measure: Implement our Commercial Strategy

This measure reflects how we are implementing our Commercial Strategy (which superseded the Enterprise plan) and sets out what we will focus on in the next five years and NRW's approach to commercial opportunities, including the development of the People, Planet, Prosperity measurement of commercial success and value.

### Latest position (to end of March 2022)

- Our **final milestone for this year is Annual Review prepared (for publishing April 2022) and Strategy Revision (published April 2022).**
- We have prepared the Annual Review, but it still needs to go through final signoff and translation. We accept given what a busy time it is at the start of the new financial year, that April was overly ambitious to get this published and that preparation in March and published in May would be more practical in future years.
- We have conducted a Strategy Revision exercise and no changes are to be made to the document this year so there will not be any new documentation published. We have already however delivered a summary of the year to a public audience through the Commercial Network Event that was held in March 2022.
- We have also now held the first Commercial Network event as outlined for Q3 which was delayed for more sensible timing.
- **This measure is green.**

### What we are doing next:

- We will now, in line with the commercial service plan, continue to focus on the five areas of focus outlined in the Commercial Strategy.

Measure owner: Elsie Grace

Q1	to Q2	to Q3	Year end
Amber	Amber	Amber	Green

See [here](#) for key used for green, amber or red status

[To return to start of report - see [Business Plan Performance Dashboard](#) - pages 1 and 2]







## Topic: Providing advice and guidance

### Topic summary progress (i.e. overview of work undertaken against this topic):

- This work includes maintaining relationships with other agencies and staff across NRW to provide a coherent view on the continuing impacts of EU exit and to advise Welsh Government via liaison with colleagues across the UK.
- We are working closely with Welsh Government and other agencies supporting the development of legislation and are ensuring that the long-term impact, risks and opportunities related to environmental governance are recognised. In particular, development of the new oversight body, increased risk of Judicial Review, strategic complaints work and increased liaison and advisory work related to environmental governance.
- We will continue to manage this additional permanent work on behalf of the wider organisation with the establishment of a new permanent team.

Topic owner: Ruth Jenkins

### Business Plan dashboard measure/s for this topic:

- NRW's contribution following EU Exit

*[To return to start of report - see [Business Plan Performance Dashboard](#) - pages 1 and 2]*



## Topic: Delivering our Covid-19 Renewal Programme

### Topic summary progress:

- 4 of the 6 placed based outline accommodation business cases have been approved.
- Team telephony is now in place allowing us to make and receive phone calls from any device that is running Teams.
- A room and desk booking system, essential for hybrid working, is in place.

Topic owner: Victoria Rose-Piper

### Business Plan dashboard measure/s for this topic:

- [Implement Covid-19 Renewal programme](#)

*[To return to start of report - see [Business Plan Performance Dashboard](#) - pages 1 and 2]*



## Key: Green, amber or red ratings

The detail of how the green, amber or red measure status is determined for each measure in our Business Plan dashboard is shown below. We only depart from this where necessary, for the specific measure being considered (e.g. using specific tolerances for numeric targets to be a fair reflection of performance, and to ensure alignment with long-standing performance reporting approaches for these).

Each quarter through the year, we report both a current position to that quarter, and an expected year end position. At the end of each financial year, we report each performance position within our Annual Report and Accounts, with the final reported position for each measure reflected as green, amber or red. In that report, **Green reflects achieved target or milestone**, **Amber reflects close to target or milestone**, and **Red reflects missed target or milestone**.

Some measures have no pre-set green, amber or red categorisation in place. This is often the case for measures that are new/emerging work areas, or where a pre-set approach would not make sense. Ratings for these measures are therefore based on a common-sense reflection approach in year – i.e. a fair reflection of the position at that time

### Respond to the Climate Emergency

Page	Measure	Type	Red is...	Amber is...	Green is...
6	<a href="#">Climate emergency across NRW</a>	Milestone	Activity reflected in milestone is not near completion	Activity reflected in milestone is near complete (e.g. expected to be completed a month later than planned)	Activity reflected in milestone is effectively complete
8	<a href="#">Verification of Glastir Woodland grant scheme applications</a>	Numeric	No pre-set Red / Amber / Green rating approach in place, i.e. common-sense approach to Red rating applies, focused on fair reflection of position	No pre-set Red / Amber / Green rating approach in place, i.e. common-sense approach to Amber rating applies, focused on fair reflection of position	No pre-set Red / Amber / Green rating approach in place, i.e. common-sense approach to Green rating applies, focused on fair reflection of position







25	<a href="#">Progress of our work to reduce pollution from metal mines</a>	Milestone	Activity reflected in milestone is not near completion	Activity reflected in milestone is near complete (e.g. expected to be completed a month later than planned)	Activity reflected in milestone is effectively complete
27	<a href="#">Support implementation of the Welsh National Marine Plan</a>	Milestone	Activity reflected in milestone is not near completion	Activity reflected in milestone is near complete (e.g. expected to be completed a month later than planned)	Activity reflected in milestone is effectively complete
28	<a href="#">Progress NRW's actions in the Wales Marine Protected Area network management actions plan</a>	Milestone	Activity reflected in milestone is not near completion	Activity reflected in milestone is near complete (e.g. expected to be completed a month later than planned)	Activity reflected in milestone is effectively complete
30	<a href="#">Deliver remaining water related investigations and develop new River Basin Management Plans</a>	Milestone	Activity reflected in milestone is not near completion	Activity reflected in milestone is near complete (e.g. expected to be completed a month later than planned)	Activity reflected in milestone is effectively complete

### Developing and using our evidence with partners to advocate for and deliver SMNR

Page	Measure	Type	Red	Amber	Green
33	<a href="#">Develop Natur a Ni / Nature and Us</a>	Milestone	Activity reflected in milestone is not near completion	Activity reflected in milestone is near complete (e.g.	Activity reflected in milestone is effectively complete

	<a href="#">campaign products for launch</a>			expected to be completed a month later than planned)	
35	<a href="#">Promote, advocate and encourage use of State of Natural Resources Report</a>	Milestone	Activity reflected in milestone is not near completion	Activity reflected in milestone is near complete (e.g. expected to be completed a month later than planned)	Activity reflected in milestone is effectively complete
37	<a href="#">Use of Area Statements within NRW to embed priorities and opportunities</a>	Milestone	Activity reflected in milestone is not near completion	Activity reflected in milestone is near complete (e.g. expected to be completed a month later than planned)	Activity reflected in milestone is effectively complete

### Developing NRW into an excellent organisation that serves the communities of Wales

Page	Measure	Type	Red	Amber	Green
40	<a href="#">Response to incidents (initial category 'High', within 4 hours)</a>	Numeric	Figure / target not achieved.	Within 30% of figure / target	95% (with integer rounding, i.e. $\geq 94.5\%$ would be green)
42	<a href="#">Performance of regulated sites and water quality discharges</a>	Numeric	Figure / target not achieved.	Within 30% of figure / target	75% (with integer rounding, i.e. $\geq 74.5\%$ would be green)
44	<a href="#">Deliver NRW's combined health and educator training</a>	Milestone	Activity reflected in milestone is not near completion	Activity reflected in milestone is near complete (e.g. expected to be	Activity reflected in milestone is effectively complete

				completed a month later than planned)	
46	<a href="#">Develop and implement a People Strategy for NRW</a>	Milestone	Activity reflected in milestone is not near completion	Activity reflected in milestone is near complete (e.g. expected to be completed a month later than planned)	Activity reflected in milestone is effectively complete
47	<a href="#">Equality, Diversity and Inclusion action</a>	Milestone	Activity reflected in milestone is not near completion	Activity reflected in milestone is near complete (e.g. expected to be completed a month later than planned)	Activity reflected in milestone is effectively complete
49	<a href="#">Progress the Customer Experience Strategy</a>	Milestone	Activity reflected in milestone is not near completion	Activity reflected in milestone is near complete (e.g. expected to be completed a month later than planned)	Activity reflected in milestone is effectively complete
50	<a href="#">Deliver our Stakeholder Engagement Plan</a>	Milestone	Activity reflected in milestone is not near completion	Activity reflected in milestone is near complete (e.g. expected to be completed a month later than planned)	Activity reflected in milestone is effectively complete
52	<a href="#">Implement our Commercial Strategy</a>	Milestone	Activity reflected in milestone is not near completion	Activity reflected in milestone is near complete (e.g. expected to be completed a month later than planned)	Activity reflected in milestone is effectively complete

53	<a href="#">Timber volume offered to market / sold / dispatched</a>	Numeric	Figure / target not achieved.	Within 30% of figure / target	Figure / target effectively achieved.
----	---	---------	-------------------------------	-------------------------------	---------------------------------------

### Responding to the Covid-19 pandemic and the UK Leaving the European Union, taking opportunities for a green recovery

Page	Measure	Type	Red	Amber	Green
56	<a href="#">NRW's contribution following EU Exit</a>	Text update	No pre-set Red / Amber / Green rating approach in place, i.e. common-sense approach to Red rating applies, focused on fair reflection of position	No pre-set Red / Amber / Green rating approach in place, i.e. common-sense approach to Amber rating applies, focused on fair reflection of position	No pre-set Red / Amber / Green rating approach in place, i.e. common-sense approach to Green rating applies, focused on fair reflection of position
58	<a href="#">Implement Covid-19 Renewal programme</a>	Milestone	Activity reflected in milestone is not near completion	Activity reflected in milestone is near complete (e.g. expected to be completed a month later than planned)	Activity reflected in milestone is effectively complete

At the end of each financial year, we report each performance position within our Annual Report and Accounts, with the final reported position for each measure reflected as green, amber or red. In that report, **Green reflects achieved target or milestone**, **Amber reflects close to target or milestone**, and **Red reflects missed target or milestone**.

## Annex 2: Internal Performance Report (to Q4)

### Introduction

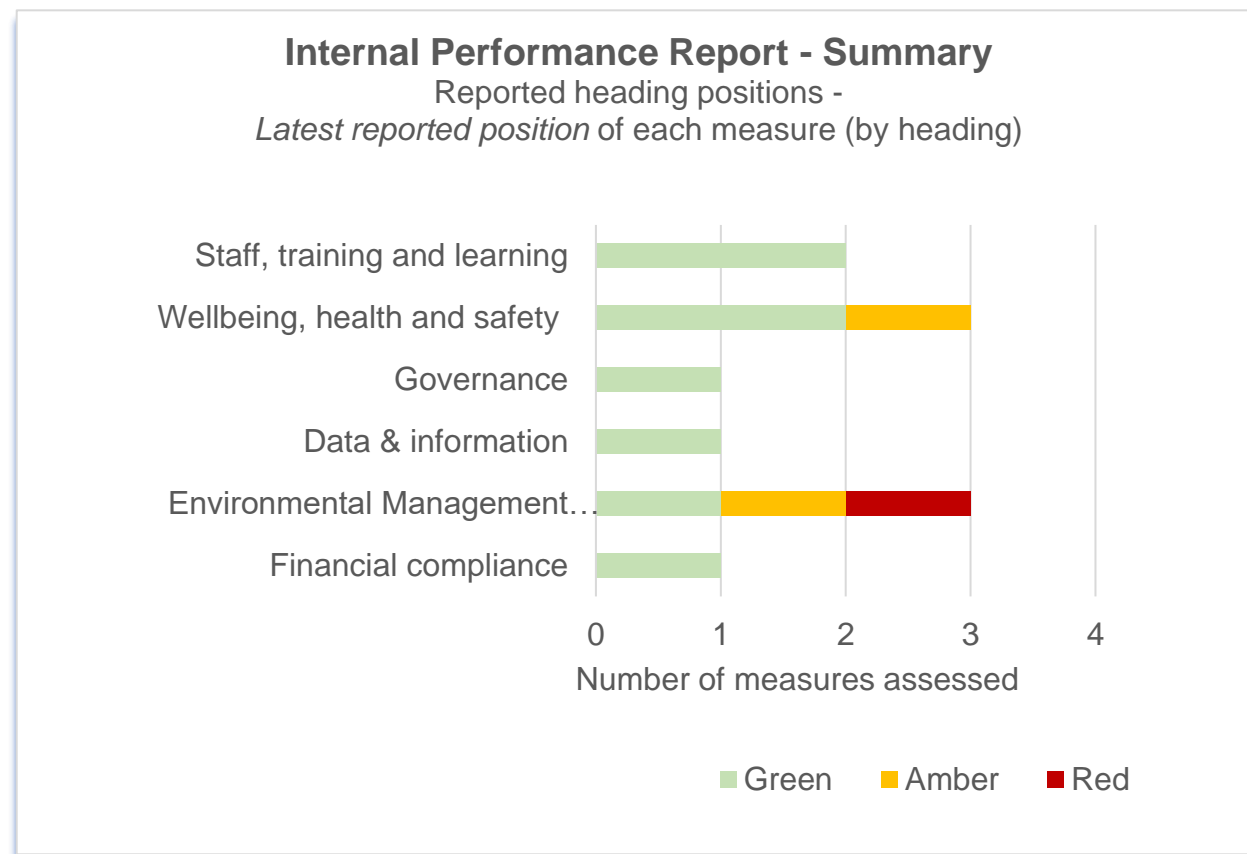
This new Internal Performance Report gives an overview of our internal performance management.

This report reflects our latest position (Quarter 4, i.e. to the end of March 2022) in relation to measures under the following headings:

- **Financial compliance**
- **Environmental Management System** (EMS)
- **Data & information**
- **Governance**
- **Wellbeing, Health & Safety**
- **Staff, training and learning**

The year end performance position in relation to all measures is (as shown in the illustration, right):

Eight green, two amber and one red. Green reflects achieved target or milestone, Amber reflects close to target or milestone, and Red reflects missed target or milestone.



## Measures to note

The following page sets out the latest high-level summary position\* in relation to the headings and highlighted measures in this Internal Performance Report (see 'Remaining measures' overleaf for the full list of headings and measures not already highlighted on this page). The updates below include all measures that are red or amber.

### Financial compliance:

- **Payments performance** to our suppliers is Green at year end (at 96% for March) with over 21,000 invoices processed over the year. A fantastic result, turning around the red performance of our last report, and a real achievement given the obstacles faced during the year (and the 6% increase in invoices received this year)

### Environmental Management System (EMS):

- **Enforcement response** is Amber at year end, with four enforcement notices issued to NRW this year (red would be classed as over five). Any response is reviewed by relevant internal groups, and by our external auditors.
- **Non-conformity or Corrective Action Request** from internal EMS audit is Red at year end with 20 (up to twelve would be classed as green). Any raised are reported and reviewed by relevant internal groups, and by our external auditors.

### Wellbeing, Health & Safety:

- **Absence** is Amber at year end (at 3.6% for March), but has reduced in the past two months (3.3% or below would achieve green). Improved reporting and support around absence is being established for managers and team leaders.

Further detail can be found on the next page for the measures not already covered above

---

\*Overall/performance key: The overall/performance status for every measure reflects a green, amber or red state, i.e.:  
Green - achieved target or milestone; Amber - close to target or milestone; Red - missed target or milestone.

## Remaining measures

The following reflects the latest high-level summary performance position in relation to each measure in this Internal Performance Report (that have not already been highlighted on the previous page).

### Data and information

- Information Commissioner's Office (ICO) reported incidents is Green with no such investigations ongoing at year end

### Governance:

- All people working for us are required to declare where their official and/or private interests may be perceived to conflict with NRW's work. Completion of these 'Declarations of Interest' is Green at year end (i.e. at least 90%), with the relevant declaration in place for the vast majority of staff

### Environmental Management System (EMS):

- Environmental Incidents is Green for the year (i.e. less than 21), with 15 reports of NRW (or contractor) related environmental incidents this year.

### Wellbeing, Health & Safety:

- Health & Safety Near Misses is Green at year end with an increase on reported near misses compared with last year
- Health and Safety Active Monitoring (i.e. regular inspection and checking to ensure that wellbeing, health and safety standards are being implemented) is Green at year end, with recorded Active Monitoring events up compared with last year

### Staff, training and learning:

- Personal Development Plans (PDPs) in place is Green at year end for plans being in place (green reflects 90% or higher)
- 'Mandatory E-Learning' (online training items all NRW staff are required to complete) is Green at year end (green is at least 89.5%)



## Papur y Bwrdd

Dyddiad y Cyfarfod:	13.07.2022
Teitl y papur:	<b>Rôl a gobeithion CNC ar gyfer Adolygiad Prisiau Cwmnïau Dŵr Ofwat (PR24)</b>
Cyfeirnod y Papur:	22-07-B16
Noddir y Papur gan:	Ceri Davies, Cyfarwyddwr Gweithredol Tystiolaeth, Polisi a Thrwyddedu
Paratowyd y Papur gan:	Natalie Hall, Rheolwr Dŵr Cynaliadwy Ruth Johnston, Cynghorydd Arbenigol Arweiniol, Strategaeth Ddŵr
Cyflwynir y Papur gan:	Sian Williams, Pennaeth Gweithrediadau Gogledd-orllewin Cymru
Diben y papur	Trafodaeth
Crynodeb	<p>Bydd buddsoddiad o filiynau o bunnoedd yn amgylchedd Cymru yn digwydd wrth i Ofwat gymeradwyo cynlluniau busnes cwmnïau dŵr drwy Adolygiad Prisiau 2024 (PR24). Mae gan CNC rôl yn y broses hon i nodi rhwymedigaethau deddfwriaethol ac amgylcheddol eraill cwmnïau dŵr ac i ddylanwadu ar raddfa a chyflymder y buddsoddiad i fodloni'r rhwymedigaethau hynny.</p> <p>Rydym am ddeall barn y Bwrdd ar rôl CNC yn Adolygiadau Prisiau Ofwat a chadarnhau a yw'r Bwrdd yn dymuno craffu ar gynigion cynlluniau busnes PR24 cwmnïau dŵr Cymru.</p>

## Cefndir

- Mae cwmnïau dŵr a charthffosiaeth yn darparu gwasanaethau hanfodol i gwsmeriaid, yn cyflenwi dŵr yfed ac yn rheoli a chludo dŵr gwastraff ymaith. Mae hyn yn gwbl ddbynnol ar allu'r amgylchedd a'r gwasanaethau ecosystem sydd ar gael i ddarparu dŵr crai a derbyn dŵr gwastraff wedi'i drin. Er mwyn diwallu anghenion cenedlaethau'r presennol a'r dyfodol, rhaid rheoli dŵr yn gynaliadwy er mwyn sicrhau bywydau iach,

ecosystemau gwydn a gweithgareddau economaidd gwerth uchel. Mae angen buddsoddiad sy'n cael ei ariannu drwy filiau cwsmeriaid er mwyn cefnogi datblygu, cymunedau ffyniannus ac ecosystemau iach a gwydn.

2. Ers preifateiddio'r diwydiant dŵr a charthffosiaeth yn 1989, mae fframwaith rheoleiddio wedi bod ar waith i sicrhau bod defnyddwyr yn derbyn safonau gwasanaeth o ansawdd uchel am bris teg. Bob pum mlynedd, mae Ofwat (y rheoleiddiwr economaidd) yn pennu terfynau ar brisiau biliau cwsmeriaid sy'n galluogi cwmnïau dŵr i ariannu'r gwaith o ddarparu gwasanaethau i gwsmeriaid, yn unol â safonau a gofynion amgylcheddol perthnasol. Bydd cwmnïau dŵr yn cyflwyno eu cynlluniau busnes (yn cwmpasu 2025 i 2030) i Ofwat erbyn 2 Hydref 2023. Bydd penderfyniad Ofwat ar gynlluniau busnes cwmnïau dŵr, a'r biliau i gwsmeriaid a lefelau buddsoddi dilynol, yn dod i ben ym mis Rhagfyr 2024.
3. Mae ein hamgylchedd dŵr a'r ffordd rydym yn ei ddefnyddio yn destun sylw'r cyhoedd a gwleidyddion. Mae Rhaglen Lywodraethu Llywodraeth Cymru yn pennu'r angen am welliannau o ran ansawdd dŵr a mwy o ddefnydd o'n dyfroedd ar gyfer hamdden. Ac eto, mae materion fel lefelau ffosffad mewn dalgylchoedd Ardal Cadwraeth Arbennig (ACA) ac amllder gorlifo i afonydd yn dangos bod y systemau hyn eisoes yn dioddef effeithiau. Bydd newid hinsawdd yn cynyddu'r pwysau hwn, yn enwedig o ran argaeledd cyflenwadau dŵr. Bydd hyn yn effeithio ar gwsmeriaid, ond hefyd ar ansawdd dŵr oherwydd llai o allu i wanhau gollyngiadau a thymheredd dŵr uwch.
4. Arweiniodd adolygiadau prisiau Ofwat at fuddsoddiad ar gyfer gwelliannau amgylcheddol o oddeutu £200 miliwn yn PR14 a £250 miliwn yn PR19, a hynny ar ben costau llinell sylfaen a chynnal a chadw cwmnïau dŵr yng Nghymru. Mae potensial i PR24 wireddu'r un lefel o fuddsoddiad neu hyd yn oed fwy.

## Beth sy'n newydd yn PR24?

5. Roedd adolygiadau prisiau blaenorol yn canolbwyntio ar gyfnod o bum mlynedd yn unig. Ar gyfer PR24, mae Ofwat yn disgwyl i gwmnïau gynllunio ar gyfer y tymor hwy gyda 2050 fel gorwel i'r cynlluniau. Diben hyn yw sicrhau buddsoddiad strategol hirdymor, caniatáu dulliau gweithredu sy'n seiliedig ar ddalgylchoedd ac osgoi gwariant tymor byr sy'n achosi asedau diangen. Ar gyfer PR24, mae'n rhaid i gwmnïau dŵr ddarparu cynllun busnes wedi'i gostio'n llawn ar gyfer 2025-2030, cynllun gydag amlinelliad o gostau ar gyfer 2030-2035 a chynllun amlinellol ar gyfer 2035-2050.

## Rhwymedigaethau amgylcheddol

6. Fel rhan o'r adolygiad prisiau, rydym yn gweithio gyda phob cwmni dŵr i nodi eu rhwymedigaethau i gydymffurfio â deddfwriaeth a pholisi amgylcheddol o fewn Rhaglen Amgylcheddol Genedlaethol a disgwyliadau ehangach. Mae llawer o'r rhwymedigaethau hyn yn seiliedig ar ddeddfwriaeth y DU gyfan a deddfwriaeth sy'n benodol i Gymru, megis Rheoliadau Dyfroedd Ymdrochi 2013, Rheoliadau Cynefinoedd 2017 a Deddf yr Amgylchedd (Cymru) 2016, gyda llawer o'r rhain yn deillio o Gyfarwydddebau Ewropeaidd.

## Cyfeiriad strategol

7. Mae Datganiad Polisi Strategol Llywodraeth Cymru i Ofwat yn egluro polisiâu a blaenoriaethau Llywodraeth Cymru y mae angen i Ofwat eu hystyried wrth ddatblygu ei ddull o ymdrin â PR24. Gosodwyd y datganiad hwn yn y Senedd ar 5 Gorffennaf 2022.
8. Mae Rhaglen Lywodraethu Llywodraeth Cymru yn cynnwys ffocws penodol ar ansawdd dŵr a manteision llesiant y mae amgylchedd dŵr yn gallu eu cynnig i gymdeithas, gydag ymgyrch i ddynodi dyfroedd hamdden. Daw hyn ar adeg pan mae ansawdd dŵr yng Nghymru yn destun mwy o ymwybyddiaeth a chraffu. Mae pwysau ar gwmnïau dŵr, CNC, Ofwat a Llywodraeth Cymru i wneud mwy i wella ansawdd afonydd.
9. Mae ein Cadeirydd wedi cyfarfod â'r Gweinidog sawl gwaith ers mis Mai i drafod ei blaenoriaethau, y Rhaglen Lywodraethu, a'i disgwyliadau o ran CNC. Mae rhai o'r sgorsiau hyn wedi canolbwyntio'n benodol ar ei blaenoriaethau ar gyfer dŵr yng Nghymru. Cadarnhawyd mai'r blaenoriaethau yw gwella cydymffurfiaeth â Rheoliadau'r Amgylchedd Dŵr (Y Gyfarwyddeb Fframwaith Dŵr) (Cymru a Lloegr) 2017, gwella ansawdd afonydd ACA (a helpu i ddatod y cyfyngiadau presennol ar geisiadau cynllunio), cyflawni ymrwymïadau yn erbyn y Map Gorlif Stormydd, a dynodi dyfroedd hamdden mewndirol newydd.
10. Mae'r Cadeirydd wedi ategu ein hymrwymiad i wella ansawdd dŵr, ond ar yr un pryd mae hefyd wedi hysbysu'r Gweinidog y bydd angen trafodaethau pellach ynghylch cyllid os ydym am gyflawni mwy na'r hyn rydym wedi ymrwymo i'w wneud eisoes. Mae'n werth nodi hefyd bod ymateb y Gweinidog i adroddiad y Pwyllgor Newid Hinsawdd, yr Amgylchedd a Seilwaith ar Orlif Stormydd yn glir ynghylch yr angen i ystyried y goblygiadau ariannol sydd ynghlwm wrth ddull gweithredu gwell.
11. Mae'r Prif Weinidog a'r Gweinidog Newid Hinsawdd yn ystyried ansawdd dŵr yng Nghymru yn flaenoriaeth bwysig. Bydd y Prif Weinidog yn datblygu'r drafodaeth drwy gynnal Uwchgyhadledd yn Sioe Frenhinol Cymru ar 18 Gorffennaf 2022, gan edrych ar broblem ffosffad mewn afonydd ACA mewn perthynas â'r cyfyngiad presennol ar geisiadau cynllunio ac adeiladu tai. Er y bydd hyn yn cynnwys nifer o randdeiliaid allweddol eraill, bydd ffocws ar y cysylltiad rhwng ansawdd dŵr a chynllunio datblygu, ac mae'n anochel y bydd hyn yn cynnwys effaith gweithgareddau cwmnïau dŵr ar ansawdd dŵr.

## Llywodraethu

12. Mae Llywodraeth Cymru wedi sefydlu Fforwm PR24. Rôl y Fforwm yw sicrhau dull cydweithredol ymhlith y Llywodraeth, rheoleiddwyr (h.y. CNC, Arolygiaeth Dŵr Yfed, Ofwat), cwmnïau dŵr a rhanddeiliaid ehangach yng Nghymru er mwyn arwain a llywio'r gwaith o ddatblygu Strategaethau Cyflawni Hirdymor a Chynlluniau Busnes PR24 cwmnïau dŵr.

13. Yn fewnol, yr is-grŵp tir a dŵr cynaliadwy (SLWSG) sy'n gyfrifol am lywodraethu, gan fwydo gwybodaeth i'r Bwrdd Busnes Rheoleiddio (RBB) a'r Bwrdd Busnes Rheoli Adnoddau Naturiol (NRMBB).
14. Oherwydd natur proffil uchel y gwaith hwn a'r cyfle y mae'n ei gynnig i fuddsoddi mewn gwelliannau ansawdd dŵr yng Nghymru, mae lle i rôl ar gyfer Bwrdd CNC.

## Ein dull arfaethedig o ymdrin â PR24

15. Mae'r meysydd gwaith eang sydd eu hangen i gyflawni ein rôl yn PR24 fel a ganlyn.
  - a. Cydweithio ag Ofwat, Llywodraeth Cymru, cwmnïau dŵr, Asiantaeth yr Amgylchedd, Natural England ac (os oes angen) rhanddeiliaid eraill i ddylanwadu ar bolisïau, canllawiau a phenderfyniadau. Mae hyn yn cynnwys cymryd rhan yn Fforwm PR24 Llywodraeth Cymru ac ymateb i nifer o ymgynghoriadau a gofynion Ofwat.
  - b. Nodi ein disgwyliadau hirdymor i weledigaeth 2050 i roi gwybod i eraill am yr hyn rydym eisiau ei gyflawni dros Gymru.
  - c. Sefydlu'r rhwymedigaethau statudol i gwmnïau dŵr gyflawni yn eu cynlluniau busnes drwy gyfres o ddogfennau sbarduno a chanllawiau (os oes eu hangen).
  - d. Cydweithio ar y Rhaglen Amgylcheddol Genedlaethol sy'n manylu ar y gofynion dŵr a dŵr gwastraff (gall y rhain fod yn benodol i Gymru gyfan neu'n benodol i'r safle).
  - e. Ochr yn ochr â hyn, rydym yn ceisio rhoi'r cyfrifoldeb uniongyrchol ar y cwmnïau dŵr i ddatblygu eu cynlluniau, gyda CNC yn cynnig sylwadau arnynt a'u herio. Manteision y dull hwn o weithredu yw:
    - i. mae'n sicrhau perchnogaeth ac atebolrwydd cwmnïau dros wneud yn siŵr eu bod yn buddsoddi i gyflawni eu rhwymedigaethau statudol ac amgylcheddol ehangach
    - ii. mae'n golygu llai o ddefnydd ar adnoddau CNC
    - iii. mae'n llai gwrthwynebus, gan greu dull sy'n dibynnu mwy ar ymddiriedaeth yn hytrach na pherthynas rhiant a phlentyn
    - iv. mae'n sicrhau mai'r cwmnïau dŵr sy'n wynebu unrhyw risgiau ynghlwm wrth fethu â chwmpasu gofynion yn unol â'n disgwyliadau.
  - f. Rydym hefyd yn awyddus i osgoi sefyllfa lle mae datblygiadau cynlluniau buddsoddi cwmnïau dŵr yn digwydd mewn ffordd ynysig sy'n atal nodi cyfleoedd i gydweithio rhwng dalgylchoedd ac atebion integredig. Rydym eisiau iddynt fynd ar drywydd dulliau arloesol, sy'n edrych ar achosion sylfaenol problemau, yn datblygu gwydnwch ac yn chwilio am atebion sy'n sicrhau manteision ehangach.
  - g. Rydym yn rhoi pwysau ar gwmnïau i leoli eu cynigion o fewn ystod lawn yr her buddsoddi.
  - h. Rydym yn ceisio dylanwadu i wneud yn siŵr bod buddsoddiad yn digwydd nawr, yn hytrach na gohirio talu amdano a gadael i genedlaethau'r dyfodol wynebu'r costau.
  - i. Rydym yn rhoi pwysau arnynt i gydnabod bod graddfa'r buddsoddiad yn ystyried yr angen iddynt ymateb i'r Argyfyngau Hinsawdd a Natur.

## Amserlen

16. Ar 20 Gorffennaf, bydd CNC yn cynnig cyflwyniad i Fforwm PR24 ar y deilliant a ddeisyfir, o ran yr Amgylchedd a gan y Rhaglen Amgylcheddol Genedlaethol, yn ogystal â'r deilliant a ddeisyfir o ran buddsoddiad sero net ac ymaddasu i'r hinsawdd.
17. Datganiad Polisi Strategol Llywodraeth Cymru i Ofwat a osodwyd yn y Senedd ar 5 Gorffennaf 2022, i sicrhau bod safbwynt polisi Llywodraeth Cymru yn rhan o ystyriaethau Ofwat ar gyfer yr adolygiad prisiau.
18. Cyhoeddi methodoleg ddrafft PR24 Ofwat ar 7 Gorffennaf 2022.
19. Cadarnhau Rhaglen Amgylcheddol Genedlaethol Cymru CNC ar 31 Mawrth 2023.
20. Cwmnïau dŵr yn cyflwyno cynlluniau busnes ar gyfer penderfyniad Ofwat ar 2 Hydref 2023.
21. Penderfyniad Ofwat ar derfynau prisiau dŵr ym mis Rhagfyr 2024.

## Y camau nesaf

22. Mae'n bosibl y bydd y Bwrdd eisiau rôl sy'n craffu ar y cyfeiriad y mae'r cwmnïau dŵr yn ei gynnig ar gyfer amgylchedd Cymru, ac yn ei herio. Er mwyn gwneud hyn, gellid gwahodd y cwmnïau dŵr i gyflwyno eu cynllun busnes a'u cynigion cyfeiriad strategol ar gyfer Cymru i Fwrdd CNC yn ystod hydref 2022. Byddem hefyd yn gwahodd Gwenllian Roberts (Cyfarwyddwr Ofwat yng Nghymru) i gefnogi'r Bwrdd i ddeall ystyriaethau cost a sut mae Ofwat yn penderfynu'n derfynol ar brisiau.
23. Os bydd y Bwrdd yn cytuno, byddwn yn ymgysylltu â'r cwmnïau dŵr i gadarnhau'r cais ac i sicrhau'r dyddiad ar gyfer sesiwn graffu.

## Argymhelliad

24. Sesiwn Bwrdd CNC i gwmnïau dŵr Cymru gyflwyno eu cynigion cynllun busnes drafft i'w trafod yn ystod hydref 2022. Gwahodd Cyfarwyddwr Ofwat Cymru Gwenllian Roberts i fynychu.
25. Os oes angen, sesiwn arall cyn cyflwyno cynlluniau busnes y cwmnïau dŵr i Ofwat ym mis Hydref 2023.

## Papur Bwrdd CNC

<b>Dyddiad y Cyfarfod:</b>	13 Gorffennaf 2022
<b>Teitl y papur:</b>	Y diweddaraf am Waith Ansawdd Dŵr â Blaenoriaeth
<b>Cyfeirnod y Papur:</b>	22-07-B17
<b>Noddir y Papur gan:</b>	Ceri Davies, Cyfarwyddwr Gweithredol Tystiolaeth, Polisi a Thrwyddedu
<b>Paratowyd y Papur gan:</b>	Siân Williams, Pennaeth Gweithrediadau
<b>Cyflwynir y Papur gan:</b>	Siân Williams, Pennaeth Gweithrediadau
<b>Diben y papur</b>	Gwybodaeth
<b>Crynodeb</b>	Mae hwn yn bapur dilynol ar ôl trafodaethau blaenorol y Bwrdd, i roi'r wybodaeth ddiweddaraf i'r Bwrdd am y cynnydd yn nifer o feysydd gwaith ansawdd dŵr â blaenoriaeth

## Cefndir

1. Mae ansawdd dŵr yn un o'r pum maes blaenoriaeth ar gyfer Cyfoeth Naturiol Cymru, fel y cytunwyd gyda'r Gweinidog. Mae'r flaenoriaeth hon yn cwmpasu maes eang o waith CNC gan gynnwys ansawdd dŵr afonydd, rheoli tir, adfer, pysgodfeydd, gorlif carthffosydd cyfun, bioamrywiaeth, adnoddau dŵr a mwy.
2. Mewn cyfarfodydd diweddar gyda'r Gweinidog, mae wedi mynegi ei diolch am yr ymdrechion sy'n cael eu gwneud ar bob lefel, ac ymrwymiad CNC i flaenoriaethu'r gwaith hwn.
3. Mae'r Bwrdd wedi cytuno ar flaenoriaeth strategol newydd ar gyfer 2022/2023 sef gwella ansawdd dŵr, drwy hybu ymwybyddiaeth y cyhoedd gan ddefnyddio ein pwerau rheoleiddio a gorfodi yn effeithiol a sbarduno cydweithio ag eraill, er mwyn lleihau'r effeithiau ar fioamrywiaeth ac iechyd pobl, gan gynnwys effeithiau arferion amaethyddol a rheoli tir. Mae hyn yn sicrhau bod Ansawdd Dŵr ar flaen ein meddyliau i gyd.

4. Diben y papur hwn yw rhoi'r wybodaeth ddiweddaraf i'r Bwrdd am yr holl weithgareddau gwahanol rydym yn ymwneud â hwy ar Ansawdd Dŵr, ein cynnydd hyd yma a'r hyn fydd yn digwydd nesaf.

## Cytundeb Lefel Gwasanaeth

5. Fel gyda meysydd gwaith eraill, rydym wedi bod yn gweithio'n galed i ddatblygu ein cynigion lefel gwasanaeth yn barod ar gyfer trafodaethau gyda thîm Nawdd Llywodraeth Cymru.
6. Mae'n amlwg iawn nad yw'r adnoddau angenrheidiol ar gael ar hyn o bryd i fodloni uchelgais Cyfoeth Naturiol Cymru a'r Gweinidogion. Byddwn felly'n parhau i weithio'n agos gyda chydweithwyr yn Llywodraeth Cymru i gytuno ar lefelau'r gwasanaeth y gallwn ei ddarparu, ac i flaenoriaethu ein gwaith hyd nes y daw'r trafodaethau ar y Cytundeb Lefel Gwasanaeth i ben.
7. Er mwyn cyflawni'r isafswm sy'n ofynnol bellach, rydym yn amcangyfrif bod angen 44 o Benodiadau Cyfnod Penodol ychwanegol, wedi'u gwasgaru ar draws yr adran Tystiolaeth, Polisi a Thrwyddedu a'r adran Gweithrediadau.
8. Rydym wedi cytuno'n ddiweddar i ariannu 26 o'r swyddi hyn er mwyn mynd i'r afael â blaenoriaethau megis Map Gorlif Stormydd, Cyfathrebu, Adolygiad Prisiau 24 (PR24), Afonydd Ardal Cadwraeth Arbennig (ACA) ac ymchwiliadau'r Gyfarwydeb Fframwaith Dŵr, drwy gymysgedd o ailbennu blaenoriaethau, goramserlennu, swyddi wedi'u hariannu gan referniw Llywodraeth Cymru a symud arian o fannau eraill (e.e. Teithio a Chynhaliath) yn yr adran Tystiolaeth, Polisi a Thrwyddedu a'r adran Gweithrediadau ar gyfer y flwyddyn ariannol hon. Byddwn yn dechrau recriwtio cyn gynted â phosibl.
9. Swyddi dros dro fydd y rhain, a fydd yn ein helpu yn y tymor byr, ond nid ydynt yn gynaliadwy yn y tymor hwy gan ein bod yn creu effeithiau o ran adnoddau ac ariannu gwaith blaenoriaeth mewn meysydd eraill.
10. Drwy'r Cytundeb Lefel Gwasanaeth, byddwn hefyd yn ystyried sut y byddwn yn blaenoriaethu ein gwaith os na fyddwn yn llwyddo i gael arian ychwanegol. Mae'r gwaith hwn yn parhau.

## Adolygiad mewnol o waith Ansawdd Dŵr

11. Yn flaenorol, nodwyd bod angen i ni adolygu ein blaenoriaethau a'n dull o ddarparu Ansawdd Dŵr yn CNC. Ymateb yw hynny i'r pwysau cynyddol i wneud mwy, i roi gwybod am yr hyn rydym yn ei wneud, ac i wneud hynny o fewn y cyfyngiadau cyllid sydd ar gael i ni, wrth gwrs.
12. Rydym wedi nodi angen i wneud dau brif beth:
  - a) Cyfuno'r holl waith sy'n canolbwyntio ar Ansawdd Dŵr sy'n cael ei wneud gennym mewn un Rhaglen.

- b) Adolygu'r holl waith Ansawdd Dŵr rydym yn ei wneud, a herio ein hunain ynghylch a yw hynny'n cyflawni'r hyn sydd ei angen, neu a oes raid i ni wneud pethau'n wahanol.

Mae angen i hyn oll gydweddu â'r gwaith Cytundeb Lefel Gwasanaeth a'i ategu.

13. Nodwyd hefyd yr angen am arbenigwr cyfathrebu penodol ar gyfer y gwaith hwn, a byddwn yn ariannu swydd dros dro ar gyfer cyfathrebu Ansawdd Dŵr tan ddiwedd y flwyddyn ariannol hon, pan fydd y swydd yn cael ei hadolygu. Dyma un o'r 26 swydd y cyfeirir atynt ym mharagraff 8.
14. Mae Atodiad 1 yn dangos y strwythur y byddwn yn ei fabwysiadu ar gyfer y ddwy elfen hyn o'r gwaith rydym wedi cytuno i'w hariannu (o dan baragraff 8 uchod). Y cam nesaf yw symud ymlaen i gyflawni'r gwaith hwn, naill ai drwy ddefnyddio gweithwyr presennol, recriwtio neu ddefnyddio contractwyr allanol arbenigol. Noder ei bod yn annhebygol y bydd y dyddiad arfaethedig ar gyfer cam cyntaf yr adolygiad (sef diwedd Gorffennaf) yn cael ei fodloni. Bydd rhagor o wybodaeth am y camau nesaf a'r amserlen ar gael erbyn cyfarfod y Bwrdd a byddwn yn rhoi'r wybodaeth ddiweddaraf yno. Y flaenoriaeth yw cwblhau'r gwaith hwn cyn gynted â phosibl.

## Tasglu Ansawdd Afonydd Gwell

15. Bydd y Cynlluniau Gweithredu Gorlif Stormydd, sy'n manylu ar sut y bydd pob sefydliad partner yn cyflawni eu hymrwymadau o dan y Map, yn cael eu lansio ar 5 Gorffennaf. Bydd y lansiad yn cynnwys datganiad ysgrifenedig gan y Gweinidog, a disgwyliwn rywfaint o sylw yn y cyfryngau o gwmpas y dyddiad hwnnw.
16. Y sefydliadau partner yw: Llywodraeth Cymru, CNC, Dwr Cymru, Hafren Dyfrdwy, Ofwat, Afonydd Cymru a'r Cyngor Defnyddwyr Dŵr (CCW).
17. Bydd y cynlluniau ar gael ar wefan Llywodraeth Cymru, a'r cam nesaf yw i'r holl bartneriaid weithio i gyflawni'r ymrwymadau a wnaed.
18. Rydym yn falch iawn o'r cydweithio a'r gwaith a wnaed hyd yn hyn, ac yn ddiolchgar am y gefnogaeth gan y Cadeirydd a'r Bwrdd i alluogi hynny i ddigwydd.
19. Mae potensial i ehangu'r Tasglu yn y dyfodol, i gynnwys cylch gwaith ehangach na Gorlif Stormydd a sefydliadau partner eraill. Fodd bynnag, mae'r ffocws ar hyn o bryd ar gyflawni cynlluniau gweithredu Gorlif Stormydd.

## Y Gyfarwyddeb Fframwaith Dŵr

20. Bydd Cynlluniau Rheoli Basn Afon ar gyfer afon Dyfrdwy a Gorllewin Cymru yn cael eu cyhoeddi yn ystod yr wythnos sy'n dechrau ar 18 Gorffennaf. (Asiantaeth yr Amgylchedd sy'n arwain ar afon Hafren a chaiff y cynllun perthnasol ei gyhoeddi yn ddiweddarach yn y flwyddyn).
21. Mae'r rhain yn garreg filltir bwysig ac yn rhoi ffocws clir i'n gwaith am y 6 blynedd nesaf.



22. Ni allwn gyflawni'r camau gweithredu ynddynt ar ein pen ein hunain, felly mae'n bwysig i ni barhau i ddatblygu'r dull partneriaeth cadarn sydd ar waith eisoes, ac ehangu hynny i ymateb i heriau'r presennol a'r dyfodol o fewn y Cynlluniau Rheoli Basn Afon ac mewn mannau eraill.

## Perfformiad Blynyddol Cwmnïau Dŵr

23. Bydd Adroddiadau Perfformiad Blynyddol y Cwmnïau Dŵr yn cael eu cyhoeddi ar 8 Gorffennaf. Bu'r cyfryngau yn dangos cryn ddiddordeb mewn Cwmnïau Dŵr a'u heffaith ar yr amgylchedd, ac yn ddi-os bydd yr adroddiadau'n ennyn sylw a chraffu pellach.

24. Bydd llawer o'r sylw ar adroddiad Dŵr Cymru, wrth i'r cwmni ddisgyn o bedair seren i dair. Gostyngodd eu perfformiad oherwydd tri digwyddiad llygredd difrifol, gostyngiad yn lefelau hunangofnodi digwyddiadau a gostyngiad o ran cydymffurfiaeth â'r terfynau rhifol a osodi ar gyfer rhyddhau.

25. Rydym eisiau i Dŵr Cymru wella eu perfformiad a disgwyliwn iddynt roi cynlluniau ar waith i sicrhau bod hyn yn digwydd.

26. Rydym yn siomedig iawn yn y gostyngiad hwn yn lefel perfformiad y prif gwmni dŵr yng Nghymru. Mae hynny wedi'i gyfleu gan ein Cadeirydd, ein Prif Weithredwr ac yn y cyfarfod adolygu perfformiad pedeir-rhan a gynhaliwyd yr wythnos diwethaf.

27. Mae hyn yn amlwg yn destun pryder i ni, a disgwyliwn i Dŵr Cymru wneud yn well. Yn yr un modd, rydym wedi gweld dirywiad ym mherfformiad amgylcheddol Hafren Dyfrdwy a byddwn yn pwysu arnynt hwy i gyflawni gwelliannau yn ystod y misoedd nesaf.

28. Rydym wrthi'n cynllunio ar gyfer yr Adolygiad Cyfnodol nesaf o Fuddsoddiad Cwmnïau Dŵr, a bydd hyn yn cael ei drafod fel eitem ar wahân yn y cyfarfod hwn.

## Afonydd ACA

29. Rydym wedi bod yn gweithio ar fynd i'r afael â'r sylwadau a wnaed ynghylch y cyngor diwygiedig i awdurdodau cynllunio (fersiwn 3) gan aelodau Is-grŵp Cynllunio Cymru. Caiff ei gyflwyno i Fwrdd Prosiect Afonydd ACA i'w gymeradwyo'n derfynol, ei gyfieithu a'i gyhoeddi ar y we.

30. Mae ein timau Gwasanaeth Cynghori Cynllunio Dewisol yn parhau i dderbyn lefel uchel o ymgynoriadau gwaith achos ar ddatblygiadau gyda materion cynllunio sy'n gysylltiedig â ffosforws. Rydym wedi drafftio egwyddorion niwtraliaeth maethynnau a fydd yn cael eu cyhoeddi ar ein gwefan unwaith y byddant wedi'u cymeradwyo. Rydym hefyd wedi penodi contractwyr i ddatblygu canllawiau CNC i staff ar ddefnyddio Cyfrifanellau Maethynnau. Mae'r rhain yn meddu ar y potensial i fod yn arf gwerthfawr wrth gynllunio datblygu, yn enwedig ar lefel Cymru, er bod yn rhaid sefydlu fframwaith addas i sicrhau eu bod yn effeithiol a'u bod yn gallu darparu'r ymyriadau cywir i leihau llygredd ffosforws.

31. Rydym hefyd yn gweithio gyda rhanddeiliaid lleol i ddatblygu Byrddau Rheoli Maetholion ar gyfer pob dalgyrch afon ACA, lle gellir nodi a darparu cyfleoedd ar gyfer

ymyriadau lleol a strategol i wella ansawdd dŵr. Cynhaliwyd y cyfarfod cyntaf ar gyfer Byrddau Rheoli Maetholion Cleddau, Teifi a Tywi ganol mis Mawrth a bydd Partneriaeth Dalgylch y Wysg yn cyfarfod ym mis Gorffennaf.

32. O ran ein tystiolaeth a'n gwaith monitro, gosodwyd sondiau yn afon Gwy sy'n cael eu profi ar hyn o bryd. Mewn perthynas â rheoleiddio, rydym yn dal ati i weithredu 'dim ffosffad ychwanegol' fel safbwynt trwyddedu dros dro ar gyfer unrhyw ACA sy'n methu. Bwriedir cynnal adolygiadau o drwyddedau uchafswm gollyngiadau i afonydd ACA (dros 20m<sup>3</sup>/diwrnod) yn ddiweddarach eleni, ac rydym yn bwriadu rhannu gwybodaeth o ran amddiffyniad digonol ACA dan drwyddedau gorsafoedd trin gwastraff presennol cyn gynted â phosibl. Mae hyn yn dibynnu ar CNC yn gwirio gwaith dosrannu ffynhonnell Dŵr Cymru.
33. Dyrannwyd adnodd ychwanegol (sydd wedi'i gynnwys ym mharagraff 8) i Brosiect Afonydd ACA er mwyn hwyluso'r gwaith o gynhyrchu'r cyngor a'r arweiniad sydd eu hangen i fynd i'r afael â rhai o'r problemau. Mae recriwtio ar y gweill ar gyfer y swyddi hyn.
34. Rydym wedi adolygu amcanion, strwythur a risgiau'r prosiect yn ogystal â'r cynhyrchion ar gyfer y ffrydiau gwaith. Mae hyn yn cynnwys ffrwd waith newydd ar ddeunyddiau i'r tir. Cynhaliwyd gweminarau staff i hysbysu gwaith y prosiect yn well gan gynnwys un ar y Byrddau Rheoli Maetholion ym mis Mehefin.

## Uwchgynhadledd Sioe Frenhinol Cymru

35. Mewn ymateb i bryderon ynghylch cyfyngiadau cynllunio yn Nalgylchoedd Afonydd ACA, bydd y Prif Weinidog yn cynnal Uwchgynhadledd ar faes Sioe Frenhinol Cymru ar 18 Gorffennaf.
36. Cynhelir sesiwn sy'n canolbwyntio ar ddŵr ar stondin CNC cyn hynny, lle byddwn yn arddangos enghreifftiau o'n llwyddiannau wrth fynd i'r afael â materion ansawdd dŵr yng Nghymru. Disgwylir i'r Gweinidog fynychu'r sesiwn hon.
37. Byddwn hefyd yn cynnal digwyddiad "ymylol" i'r rhai nad ydynt yn gallu mynychu'r Uwchgynhadledd oherwydd niferoedd cyfyngedig, a hynny ar ôl yr Uwchgynhadledd ei hun.
38. Rydym yn gweithio'n agos gyda chydweithwyr Llywodraeth Cymru i baratoi pecynnau tystiolaeth ar gyfer pawb sy'n mynychu.
39. Mae'n bwysig bod yr Uwchgynhadledd hon yn ddechrau rhywbeth, nid digwyddiad untro. Hoffem weld strwythur Llywodraethu newydd yn cael ei ddatblygu gyda goruchwyliaeth Weinidogol, gan na all Cyfoeth Naturiol Cymru sbarduno'r newidiadau sydd eu hangen ein hunain.

## Blaenoriaethau'r dyfodol

40. Rydym yn ymateb i geisiadau penodol gan y Bwrdd i ystyried materion a blaenoriaethau newydd a rhai sy'n dod i'r amlwg. Yn arbennig:

1. Gofynnodd y Bwrdd i ni ddatblygu dull Gwyddoniaeth Dinasyddion. Mae hyn yn cael ei arwain gan y tîm Tystiolaeth, ac mae gwaith ar y gweill. Byddwn yn diweddarau'r wybodaeth mewn cyfarfod i ddod.
2. Rydym wedi dechrau trafodaethau gyda chynrychiolwyr y Coleg Fferyllol Brenhinol yng Nghymru, Dŵr Cymru, Iechyd Cyhoeddus Cymru ac eraill ynghylch y dystiolaeth bresennol a blaenoriaethau ar gyfer monitro yn y dyfodol i asesu graddau ymwrthedd gwrthficrobaidd a fferyllol eraill mewn dŵr yfed ac yn yr amgylchedd yng Nghymru. Mae'r gwaith hwn yn y cyfnod cynnar, ond mae ein blaenoriaethau o ran tystiolaeth amgylcheddol yn cysylltu'n agos â'r flaenoriaeth Iechyd i leihau effaith cynhyrchion fferyllol ar yr amgylchedd. Darperir diweddariadau pellach wrth i'r gwaith fynd rhagddo.

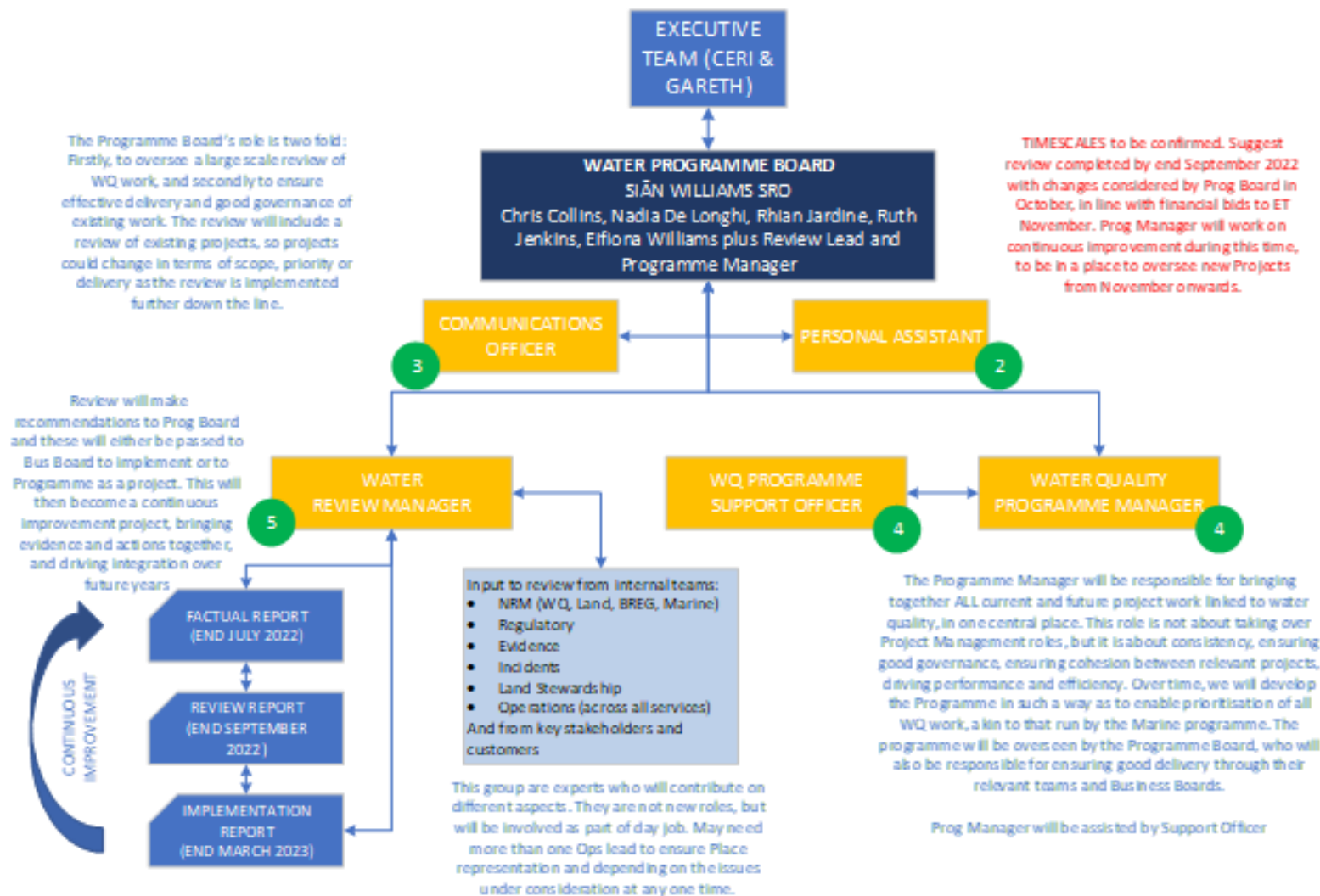
## Mesurau Perfformiad CNC

Paratowyd y papur hwn cyn i'r data perfformiad fod ar gael. Y gobaith yw y gallwn ddarparu'r wybodaeth ddiweddaraf yng nghyfarfod y Bwrdd.

## Atodiad 1

Strwythur arfaethedig ar gyfer adolygiad Ansawdd Dŵr

### Annex 1 Proposed structure for Water Quality review





# Bwrdd CNC

Dyddiad y cyfarfod 13/07/2022

Teitl y Papur **Cynllun gweithredu CNC mewn ymateb i argymhellion y Grŵp Cynghori ar Adar sy'n Bwyta Pysgod**

Cyfeirnod y Papur 22-07-B19

Noddir y papur gan Ceri Davies, Cyfarwyddwr Gweithredol Tystiolaeth, Polisi a Thrwyddedu

## Papur wedi'i baratoi gan

Patrick Lindley, Cynghorydd Arbenigol Arweiniol – Adareg Ddaearol  
Dave Mee, Cynghorydd Arbenigol Arweiniol – Rheoli Pysgodfeydd Dŵr Croyw  
Ben Wilson, Prif Gynghorydd, Pysgodfeydd  
Sarah Wood, Rheolwr Bioamrywiaeth a Chydnerthedd Ecosystemau  
Adam Cole-King, Cynghorydd Arbenigol Arweiniol – Polisi Bioamrywiaeth  
Richard Facey, Cynghorydd Arbenigol – Adareg Ddaearol  
Iwan Hughes, Arweinydd Tîm, Trwyddedu Rhywogaethau a Charbon  
Andy Robinson, Arweinydd Tîm - Pobl a Lleoedd  
Ian Williams, Arweinydd Tîm - Trwyddedu Rhywogaethau

Cyflwynwyd y papur gan Ben Wilson, Prif Gynghorydd, Pysgodfeydd

Diben y papur **Cymeradwyo**

Mae'r papur hwn yn cyflwyno camau gweithredu arfaethedig CNC mewn ymateb i argymhellion y Grŵp Cynghori ar Adar sy'n Bwyta Pysgod ar sut y gellir diogelu pysgodfeydd a stociau pysgod sy'n agored i niwed rhag pwysau ysglyfaethu, gan barhau i warchod adar sy'n bwyta pysgod.

Gofynnir i'r Bwrdd:

## Crynodeb

- **Cymeradwyo** ein dull gweithredu arfaethedig fel ymateb ystyriol i argymhellion y Grŵp Cynghori ar Adar sy'n Bwyta Pysgod.
- **Cymeradwyo'r** dull gweithredu a argymhellir gennym - **Opsiwn 3** yn amodol ar sicrhau cyllid ychwanegol ar gyfer gwaith sydd angen ei wneud.
- **Cymeradwyo'r** camau nesaf arfaethedig.







































































































































## **Criteria for public vs private agenda items at NRW Board and Board Committee Meetings**

### **Introduction**

Board meetings may be held in public, but they are not public meetings. This means that the public do not have the right to be heard at a Board meeting, even where they have the right to observe.

For the purposes of this proposal we are suggesting ways in which NRW can ensure that our business is being conducted in an open and transparent manner (especially during the restrictions resulting from the Covid-19 pandemic). The proposals are not intended to cover wider Board engagement with the public or stakeholder engagement events.

At the moment these procedures would only apply to the Board, who are required to conduct their meetings in public.

This proposal has been developed in accordance with the Information Commissioner's Office (ICO) 'Guidance for Welsh Government Sponsored Bodies and other local authorities'<sup>1</sup>, the General Data Protection Regulations (GDPR)<sup>2</sup>, the Data Protection Act (DPA) 2018<sup>3</sup> and the Freedom of Information (FOI) Act 2000<sup>4</sup>.

### **Proposal**

That all of NRW's Board meetings should be open to public scrutiny (i.e. all items to be placed on the Public Meeting agenda) unless specifically exempted under GDPR, DPA or FOI. NRW's values include to act with integrity and we adhere to the Seven Nolan Principles of Public Life (Selflessness, Integrity, Objectivity, Accountability, Openness, Honesty and Leadership). Our default position for all agenda items would therefore be "public".

This would involve the following for all Board meetings:

- Publicising all meetings in advance
- Holding all meetings in public
- Making papers for all meetings available in advance (except for private items)
- Publishing minutes of all public meetings once agreed by the Chair (with any private items redacted if necessary).

Exempted items that should be discussed at a Private Meeting include:

#### **1. Personal data**

This category covers information about any named or identifiable living person. Personal data is protected by the Data Protection Act, which makes it unlawful to transfer or release certain types of personal information. This is reflected in Section

---

<sup>1</sup> <https://ico.org.uk/media/for-organisations/documents/1261/definition-document-welsh-government-sponsored-bodies.pdf>

<sup>2</sup> <https://gdpr.eu/>

<sup>3</sup> <http://www.legislation.gov.uk/ukpga/2018/12/contents/enacted>

<sup>4</sup> [www.legislation.gov.uk/ukpga/2000/36/contents](http://www.legislation.gov.uk/ukpga/2000/36/contents)













































