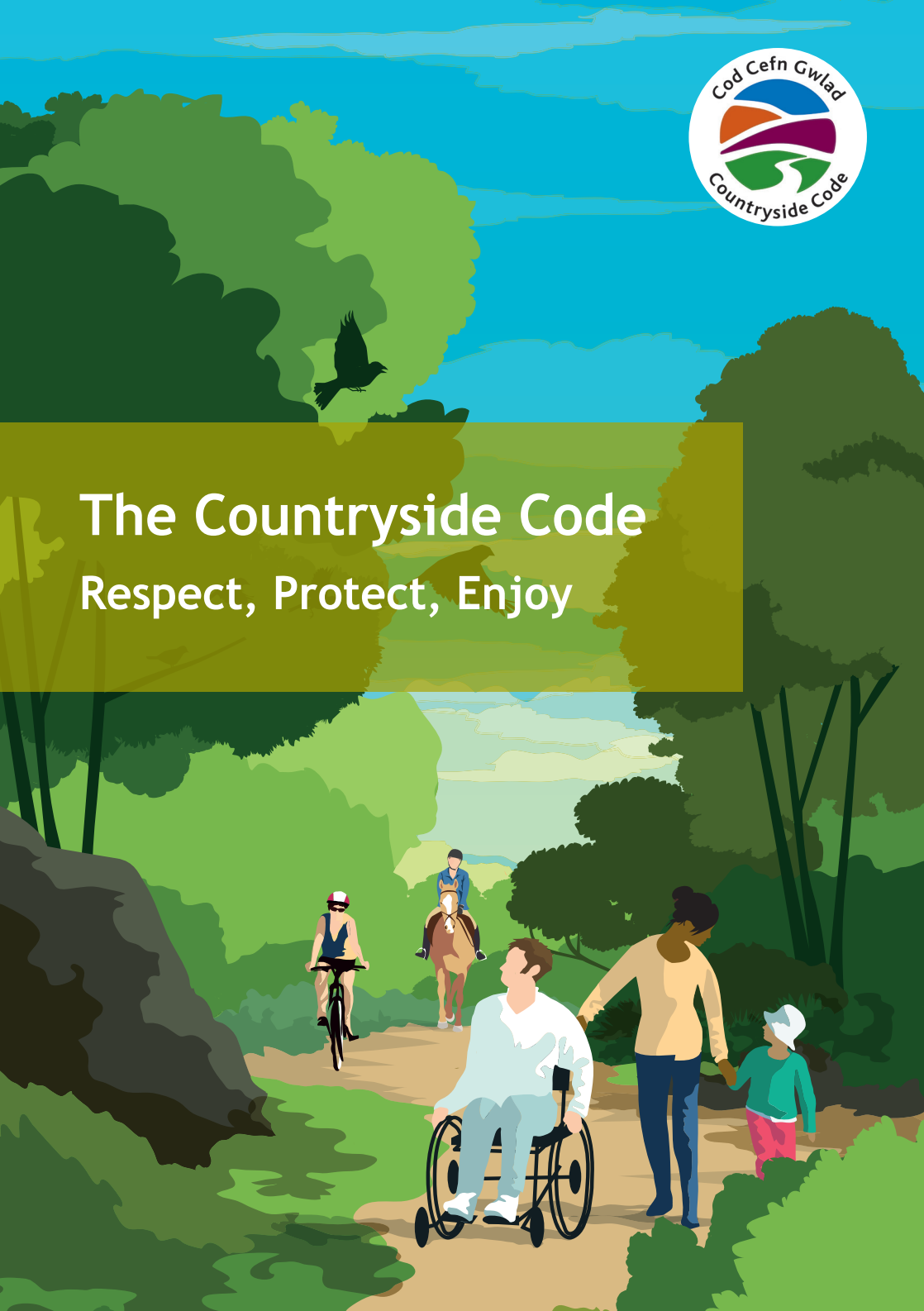




# The Countryside Code

## Respect, Protect, Enjoy



# Your guide to...

## enjoying parks and waterways, coast and countryside



### Respect everyone

- be considerate to those living in, working in and enjoying the countryside
- leave gates and property as you find them
- do not block access to gateways or driveways when parking
- be nice, say hello, share the space
- follow local signs and keep to marked paths unless wider access is available

### Protect the environment

- take your litter home - leave no trace of your visit
- do not light fires and only have BBQs where signs say you can
- always keep dogs under control and in sight
- dog poo - bag it and bin it in any public waste bin or take it home
- care for nature - do not cause damage or disturbance

### Enjoy the outdoors

- check your route and local conditions
- plan your adventure - know what to expect and what you can do
- enjoy your visit, have fun, make a memory



Scan here for  
the full code

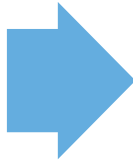
# Follow signs and symbols in the countryside

The symbols show how rights of way can be used

## Footpath



## Bridleway



## Restricted Byway



## Byway open to all traffic



# Follow advice and local signs



## Wales Coast Path

Created for walking, with horse-riding and cycling possible on some sections.



## National Trail

Created for walking, with horse-riding and cycling possible on some trails or trail sections.



## Open Access

You can walk and explore away from paths on many areas of mountain, moorland, heathland, down land and registered common land. You can find open access land on Ordnance Survey Explorer maps.



## Permissive Path

Follow advice on local signs as landowners voluntarily provide access to these paths and choose who can use them. Some open access land is made available in the same way.

For further information visit:  
[countryside-code.org.uk](http://countryside-code.org.uk)

